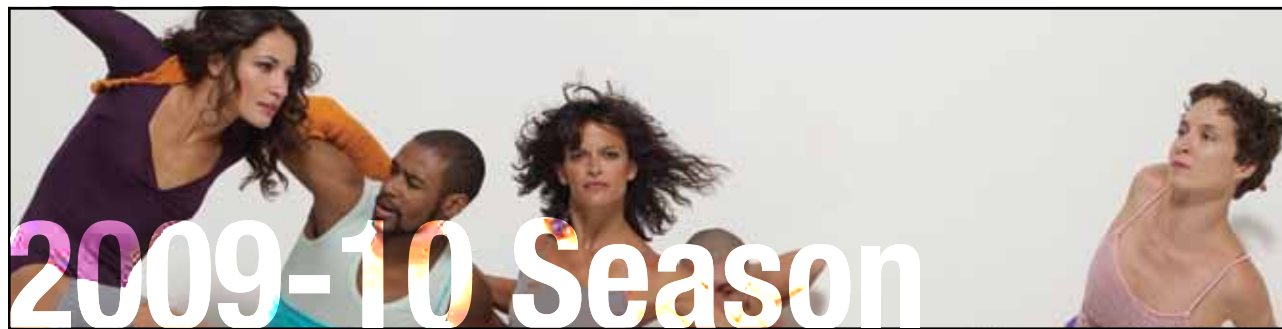


# UW World Series



World Dance Series	Performance Dates	Tickets*	Subscriptions
<b>Paul Taylor Dance Company (USA)</b>	Thurs-Sat, Oct 8-10, 2009, 8 PM	\$46	Regular: \$216
<b>Complexions (USA)</b>	Thurs-Sat, Nov 12-14, 2009, 8 PM	\$39	
<b>Richard Alston Dance Company (UK)</b>	Thurs-Sat, Jan 21-23, 2010, 8 PM	\$39	Discount: \$210†
<b>Shantala Shivalingappa (India)</b>	Thurs-Sat, Feb 11-13, 2010, 8 PM	\$41	
<b>Trey McIntyre Project (USA)</b>	Thurs-Sat, Mar 18-20, 2010, 8 PM	\$39	Student: \$120‡
<b>Compañía Nacional de Danza (Spain)</b>	Thurs-Sat, Apr 22-24, 2010, 8 PM	\$46	
World Music & Theatre Series	Performance Dates	Tickets*	Subscriptions
<b>Chitresh Das Dance Company (India)</b>	Sat, Oct 17, 2009, 8 PM	\$33	Regular: \$145
<b>Chiwoniso (Zimbabwe)</b>	Fri, Dec 4, 2009, 8 PM	\$33	
<b>Leon Bates (USA)</b>	Sat, Jan 30, 2010, 8 PM	\$33	Discount: \$140†
<b>Kálmán Balogh (Hungary)</b>	Sat, Feb 27, 2010, 8 PM	\$33	Student: \$100‡
<b>Samarabalouf (France)</b>	Sat, Apr 17, 2010, 8 PM	\$33	
President's Piano Series	Performance Dates	Tickets*	Subscriptions
<b>Sylvia Toran (Spain)</b>	Tues, Oct 13, 2009, 8 PM	\$35	Regular: \$166
<b>Lise de la Salle (France)</b>	Tues, Nov 24, 2009, 8 PM	\$36	
<b>Garrick Ohlsson – Part I (USA)</b>	Wed, Jan 13, 2010, 8 PM	\$37	Discount: \$160†
<b>Garrick Ohlsson – Part II (USA)</b>	Tues, Feb 9, 2010, 8 PM	\$37	
<b>Jeremy Denk (USA)</b>	Wed, Mar 31, 2010, 8 PM	\$36	Student: \$96‡
<b>Terrence Wilson (USA)</b>	Thurs, Apr 29, 2010, 8 PM	\$35	
International Chamber Music Series	Performance Dates	Tickets*	Subscriptions
<b>Vogler Quartet (Germany)</b>	Wed, Nov 4, 2009, 8 PM	\$34	Regular: \$172
<b>Amelia Piano Trio (USA)</b>	Wed, Dec 2, 2009, 8 PM	\$34	
<b>Auryn Quartet (Germany)</b>	Wed, Feb 3, 2010, 8 PM	\$34	Discount: \$166†
<b>Hugo Wolf Quartet (Austria)</b>	Wed, Mar 10, 2010, 8 PM	\$34	
<b>Emerson String Quartet (USA)</b>	Wed, Apr 14, 2010, 8 PM	\$36	Student: \$108‡
<b>La Catrina Quartet (USA/Mexico)</b>	Wed, May 19, 2010, 8 PM	\$34	

\* Subscribers receive a discount of \$3 off any single ticket.

† New subscribers, UW faculty/staff, UW alumni, seniors 60 and older; limit two discount subscriptions per household.

‡ Student subscriptions must be purchased with a copy of valid student ID. Limit one subscription per student ID.

All artists, dates, programs, and prices subject to change. All sales final; no refunds.

**Single tickets and Samplers will go on sale June 15, 2009.**

**uwworldseries.org**

## 2009-10 SEASON INFO

### Buying Subscriptions & Tickets

All UW World Series subscriptions and single tickets are sold through the UW Arts Ticket Office.

### UW ARTS TICKET OFFICE

4001 University Way NE, Seattle WA 98105

P: 206-543-4880 • F: 206-685-4141

Toll free: 800-859-5342

Open: Monday-Friday, 10 AM-6 PM

### Subscription Renewal Deadlines

#### Early Bird—Get the Best Subscription Prices

World Music & Theatre: March 14, 2009

President's Piano: March 17, 2009

World Dance: April 4, 2009

International Chamber Music: April 14, 2009

#### Save Your Seat

President's Piano: April 21, 2009

World Dance: April 25, 2009

World Music & Theatre: May 2, 2009

International Chamber Music: May 19, 2009

**Single tickets and samplers go on sale  
June 15, 2009.**

### Online Ordering @ [www.uwworldseries.org](http://www.uwworldseries.org)

- Subscriptions cannot be purchased online at this time.
- Downloadable subscription order forms are available on the website to mail, fax, or bring to the UW Arts Ticket Office. Subscriptions can also be purchased by phone.
- Single tickets can be purchased online, in person at the UW Arts Ticket office, by fax, or by phone.

### Subscriber Benefits

As a subscriber you receive a host of benefits including:

- Discounts on extra single tickets to any performance
- Cross-series ticket exchange privileges if you can't attend one of the performances in your series
- Advance notice of special events, offers, and programming changes

To find out more about these benefits, please visit [www.uwworldseries.org](http://www.uwworldseries.org).

### Finding Meany Hall

All UW World Series performances take place in Meany Hall on the UW campus. Meany Hall is located at the western edge of the campus, just off of 15th Street. Parking is available in the Central Parking Garage. There are also surface parking lots and some on-street parking within walking distance of the hall. For maps, directions, and more information, please visit [www.uwworldseries.org](http://www.uwworldseries.org).

## World Dance



Paul Taylor Dance Company • Oct 8-10, 2009



Complexions • Nov 12-14, 2009



Richard Alston Dance Company • Jan 21-23, 2010



Shantala Shivalingappa • Feb 11-13, 2010



Trey McIntyre Project • Mar 18-20, 2010



Compañía Nacional de Danza • Apr 22-24, 2010

Heart-Pounding

The 2009-10 season is a thrilling blend of returning favorites and groups new to the Meany stage. We begin with one of the world's most beloved and enduring ensembles—the Paul Taylor Dance Company. The PTDC appearance also kicks off our four-part American Masters series. Other returners include Richard Alston Dance Company from the UK and Spain's inimitable Compañía Nacional de Danza. Along the way, you'll get acquainted with Complexions (founded by Alvin Ailey alumni), Kuchipudi master Shantala Shivalingappa, and the innovative Trey McIntyre Project. Book now. Dance is a hot ticket and many of our performances sell out!

## World Music & Theatre



Chitresh Das Dance Company • Oct 17, 2009



Chiwoniso • Dec 4, 2009



Leon Bates • Jan 30, 2010



Kálmán Balogh • Feb 27, 2010



Samarabalouf • Apr 17, 2010

Eye-Opening

A more eclectic and exciting line-up of World Music & Theatre simply can't be found anywhere in town. From classical Indian dance (Chitresh Das) and Zimbabwean soul (Chiwoniso) to Hungarian cimbalom (Kálmán Balogh) and French gypsy jazz (Samarabalouf), you'll experience a global line-up second to none. And did we mention the all-Gershwin evening with pianist Leon Bates and special guest singers?

## President's Piano



Sylvia Toran • Oct 13, 2009



Lise de la Salle • Nov 24, 2009



Garrick Ohlsson • Jan 13, 2010 & Feb 9, 2010



Jeremy Denk • Mar 31, 2010



Terrence Wilson • Apr 29, 2010

Thought-Provoking

Powerhouse performers from start to finish characterize this season's roster of recitalists. We open with an evening of Spanish composers interpreted by one of Spain's own—Sylvia Toran. Then we welcome the return of France's prodigy Lise de la Salle, whose 2008 appearance was a huge hit. Chopin master Garrick Ohlsson offers up a two-part celebration of this composer's piano works. And the season concludes with not one, but two Meany Hall debuts— Jeremy Denk and Terrence Wilson.

## Int'l Chamber Music



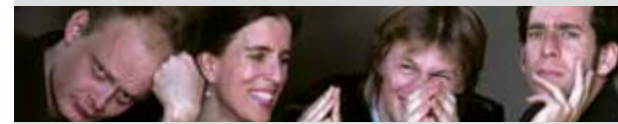
Vogler Quartet • Nov 4, 2009



Amelia Piano Trio • Dec 2, 2009



Aurnyn Quartet • Feb 3, 2010



Hugo Wolf Quartet • Mar 10, 2010



Emerson String Quartet • Apr 14, 2010



La Catrina Quartet • May 19, 2010

Soul-Stirring

The breadth and depth of the classical canon couldn't be in better hands than those of the ensembles in the 2009-10 chamber series. The Amelia, Aurnyn, and Hugo Wolf ensembles have earned well deserved reputations for excellence abroad, and it is a pleasure to have them in Meany Hall. The perennial favorite Emerson String Quartet returns in the spring for one of its splendid (and likely sold out) performances. And the Vogler and Catrina Quartets will open our ears to new collaborations and explorations from contemporary composers.